

Our flagship technology. The SCRAM Continuous Alcohol Monitoring™ system is the world's most widely used and trusted 24/7 transdermal alcohol testing system. For high-risk, hardcore DUI and alcohol offenders.



SCRAM Continuous Alcohol Monitoring™

Continuous Alcohol Monitoring (CAM), or combined CAM + House Arrest, at the flip of a switch. It's 24/7 monitoring for your high-risk/high-need alcohol clients.

SCRAM Remote Breath™

The first and only handheld, wireless, portable breath alcohol device with automated facial recognition and GPS with every single test. For your lower-risk offenders or those who have earned less intensive testing and monitoring.

SCRAM House Arrest™

Standalone house arrest monitoring built to work with today's home communications systems. Operates over home Internet routers, standard or digital phone lines, DSL, Vonage®, or an optional SCRAM-provided wireless system.

The SCRAM Systems Compliance Platform™

The SCRAMNET™ secure web application is the core of the platform, which brings together everything from monitoring of our full product suite to our best-in-industry court support program, 24/7 customer support, mobile applications, offender compliance analytics, and beyond.

“I really believe that if judges and probation departments knew about this technology and understood how successful it is, it would be on the ankle of every alcohol dependent offender in the criminal justice system.”

— C. West Huddleston
CEO, National Association of Drug Court Professionals

SCRAM Systems: OPTIONS in Alcohol Monitoring

- 1st time DUI
- Public order offenses
- Low BAC at time of arrest
- Earns reduced monitoring through program compliance



Lower Level Alcohol Misuse

LOWER RISK
SCRAM Remote Breath



Higher Level Alcohol Dependence and Addiction



- Repeat/Hardcore Drunk Drivers
- Domestic Violence
- High BAC at time of arrest
- Requires more intensive monitoring after a violation



HIGHER RISK
SCRAM Continuous Alcohol Monitoring



Sober Days™

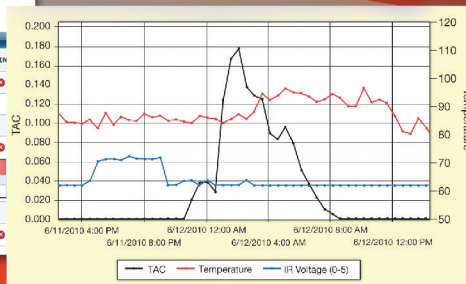
A Sober Day is a 24-hour period in which a monitored individual has no confirmed consumption of alcohol and no confirmed attempt to tamper or circumvent testing in order to mask the consumption of alcohol. To be a true Sober Day, a client must:

- Be able to present evidence-based confirmation of sobriety for each 24-hour period
- Be monitored transdermally in order to meet the required test frequency
- Be tested a minimum of once per hour every 24-hour period
- Be tested automatically, with no requirement to participate in testing

According to data from the 300,000 offenders monitored with SCRAM CAM technology, **99.3% of all offenders, every day, are completely sober and compliant.** No drinking, no tampering.



AM	EM	CLIENT	AM CRITICAL CORR.	DEVICE(S)	MAIN
+		Anderson, Bob		Bracelet: 28803 Base Station: 1003371	
	+	Glendon, Gary		DR Equipment	
		Jones, Cole		Bracelet: 62309 Direct Connect	
		Phillips, John		Bracelet: 5211 Direct Connect	
Alert					
Event Date/Time Received Date/Time Alert Status					
Revised Temper Tue 10/24/2011 - 09:06:45 AM Wed 10/26/2011 - 05:58:00 AM Unresolved					
	+	Reynolds, Tom		Bracelet: Pending Assignment Base Station: Pending Assignment	
		Smith, Phil		Bracelet: 6330 Base Station: 1003303	



FEATURES

- Independently tested, court-validated
- 24/7 Customer Support
- Dynamic, flexible training
- AMS Data Analysis of every alert
- TAC readings correlate to BAC readings with a 0.02 confirmation threshold

CAM Bracelet

- Worn 24/7
- Automated, noninvasive
- Samples perspiration every 30 minutes
- Industry-leading anti-tamper technology
- Optional House Arrest curfew monitoring in one bracelet

CAM Base Station

- Multiple ways to connect, including SCRAM Wireless™
- Automatically uploads and transmits data at prescheduled time(s)
- Downloads software updates from SCRAMNET™ to the CAM Bracelet
- SCRAM Direct Connect™ allows agent downloads in the office, on-demand, direct to a computer

SCRAMNET

- Central, secure, web-based platform where all data is stored, analyzed, reported, and maintained
- User-friendly tool that aggregates, analyzes, and graphs test results
- Custom notification and reporting protocols
- Flags and graphically depicts alcohol alerts, obstructions, tampering, schedule noncompliance, battery and equipment information
- Integrates with all SCRAM Systems™ monitoring technologies

BENEFITS

- 99.3% compliance each and every day
- National network of service providers
- Conclusively distinguishes between alcohol consumption and environmental alcohol sources
- Single-source admissibility—no back-up tests required
- Flexible data management—expand, consolidate, view at-a-glance assessments, or summarize an entire caseload
- Continuous testing means no drinking around test schedules

